

**Tuesday 21st April / Rātū 21 o  
Paengawhāwhā -**

## **School Newsletter**

**Week 2, Term 2, 2020**

*Kia ora Parents and Whānau,*

***Hutia te rito o te harakeke,  
Kei hea te kōmako e kō?  
Kī mai ki ahau;  
He aha te mea nui o te Ao?  
Māku e kī atu,  
he tāngata, he tāngata, he tāngata!***

### **Kōrero o te Tumuaki:**



*Nei rā ngā mihi aroha kia  
koutou i tēnei wā o te rāhui.*

*Ko Whaea Callie tēnei e mihi*

*kau atu ana kia koutou te whānau me te hāpori o te kura o  
Ōwhata. Aroha from afar, but never too far! It has been uncertain  
times for us all and we do hope that you are keeping well in your  
bubbles.*

*We are into our second week of home learning or distance learning  
and we have had some amazing mahi happening in our online spaces. It has also  
been great to keep in touch with whānau who are unable to connect this way, we  
continue working with the Ministry of Education to roll out internet and device  
support. In the meantime, hard-copy packs are being delivered and as of last  
Friday, we had about half of our whānau received their mahi in the post. If you are  
still waiting, we thank you for your patience and hopefully, you receive your mahi  
soon! If you have not received your pack by the end of this week please email me,  
[callie.raureti@owhata.school.nz](mailto:callie.raureti@owhata.school.nz) and I will do my best to help. Acknowledgements  
this week to all of our essential workers who have been working through the  
duration of the lockdown (rāhui), we are publishing some photos below that we  
have received. I know there will be more to come!*

*We will also provide some updates around **changes of alert levels** and what this  
means for us as a school moving into **alert level 3**.*

### ***Kia haumaruru te noho - keep safe!***

*Callie Raureti - [callie.raureti@owhata.school.nz](mailto:callie.raureti@owhata.school.nz) Cell: 021 99 22 58*

*Acting Principal.*

**Office: 345 6051 - this will be available from Wednesday 29th April.**





# Ōwhata Primary School

Te Kura o Ōwhata

Respect   Excellence   Inquiry   Integrity  
Manaakitanga   Kairangatira   Patapātai   Mana Tangata

## **Staff Acknowledgement/Mihi:**



*E te mokopuna a Hiro Menamena, he mihi aroha tēnei kia koe. He tangata whakatoī (cheeky), he tangata pūmau ki ngā āhuatanga a kui mā, a koro mā. Kua tohaina e koe i ō pūkenga nui, i ō whakaaro rangatira kei waenganui i a tātou te whānau o Ōwhata! Haere koe i runga i te aroha, i runga i te rangimārie kia whai i tō huarahi mō tō whānau, e hoa! E tuku mihi ana kia Briar, Florence, rātou ko Teia. Mā Hiro, e tiaki, e manaaki i a koutou!*

*We would like to acknowledge Matua Jared Grace (aka Superman / MA2WA), who came to us in 2018 as a senior, year 5 / 6 teacher in Okahukura (mainstream). Matua Jared has made significant contributions to our kura in this time and we are 'richer' for the sharing of his knowledge and skills, particularly, in Te Ao Māori. Matua Jared has been successful in winning a position at Rotorua Intermediate where he will continue to teach, guide and share his many skills, talents, and of course, his humour and personality. This decision is not one made lightly, but sits within the best interests of Matua, and his whānau at this time. We wish him all the best on his new endeavour and look forward to witnessing future successes and achievements. Matua's last day with us is Friday 15th May and he will be touching base with his students and whānau by video soon.*

*We have the lovely, Whaea Joanne Winiata taking over the remote teaching of Room 10 for a smooth transition with a teacher who they already know. Whaea Joanne brings her digital skills and vibrant personality to this role and we will support the transition for all tamariki and whānau. This will continue back at school for the remainder of the year.*

---

### **Key dates as we know (so far):**

- **28th April** - Change to alert level 3
  - **29th April** - Some tamariki and staff back at school physically ([see survey link](#)) - only for tamariki who need to be at school due to not being able to continue home learning
  - **11th May** - next cabinet (Government) announcement about alert level updates
  - **3rd Jul** - Term 2 end date (12 weeks in total)
-



# Ōwhata Primary School

Te Kura o Ōwhata

Respect   Excellence   Inquiry   Integrity  
Manaakitanga   Kairangatira   Patapātai   Mana Tangata

## **Alert Level Update:**

As we have now heard, from 11.59pm, Monday 27th April, NZ will move to alert level 3 which means that we are able to open our school for a limited number of students. It is recommended by the Ministry of Health that if your tamaiti / tamariki are able to continue working from home, that would be preferred, however, we open our doors to any of our students who require care/supervision over this time. Because of the guidelines we are following, we have put some things in place to protect our tamariki, staff and whānau. It may seem extensive, but we would like to ensure good safety measures. Early planning and preparation sets us up for success and for this, we need information from all whānau through a survey (link below). If at any time you need to change your plan, we will be here to support you. Please contact [robyn.hurliman@owhata.school.nz](mailto:robyn.hurliman@owhata.school.nz) or phone Callie if you are unable to complete the survey. **If your tamaiti / tamariki are staying home, we would still like you to confirm that in the survey. Please complete the [survey here](#).**

## **Essential Workers Acknowledgements:**

We would like to send a huge thank you to all of the essential workers within our Owhata whānau and community. We appreciate that you have been brave and caring at an uncertain time, often having to leave your safe bubble to make sure we could access essential services. He mihi aroha kia koutou! These are a few photos our whānau have sent in so far... Hope to see more!

## *My essential worker*



My mum is an essential worker for Love Soup over this Rahui. She picks up kai and brings it to the Mokoia Community Centre for whanau in need. Sometimes she delivers kai to people's houses if they cannot pick it up. I think she is doing a great job because it is a big responsibility. I'm really happy that she's helping people.

By [Cale Sydney](#).



Brenda Mikaere is one of many nurses who works hard to care for others. Her whānau thinks that she does an incredible job - we agree! Big thanks to our health industry through covid19, and everything else!

*KA RAWE!*



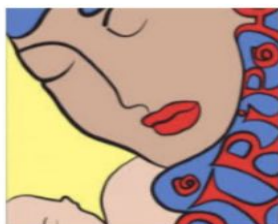
# Ōwhata Primary School

Te Kura o Ōwhata

Respect   Excellence   Inquiry   Integrity  
Manaakitanga   Kairangatira   Patapātai   Mana Tangata



*We all think that our Piripoho team are 'magic' and find many ways to enrich our local community. Thank you to all the whānau who work together to make this possible. You have supported many of our whānau during this uncertain time.*



***We do know of a few more essential workers - please send in a photo - if all we can give you is a small acknowledgement for your service, we would appreciate that opportunity.***



*Photo of the week: Kemara Whareaitu represents Rangiuru from Pukehina!*

**Take care,  
Arohanui, CR and Team Owhata! - He waka eke noa, we are all in this together!**